

Louisiana Statewide Transportation Plan Update



Executive Advisory Council Workshop
Baton Rouge, LA

March 11, 2014

**CDM
Smith**

Agenda

Welcome

Issues/Challenges

Vision, Goals, Objectives and Performance Measures

Needs Summary

Funding Scenarios/Funding Gap

Recommendations

Megaprojects

Budget Line Items

Decisions for Today

Vision, Goals, Objectives and Performance Measures Approvals

Recommendations Approvals

Megaprojects Approvals

Budget Line Items Approvals

Issues/Challenges

Issues/Challenges



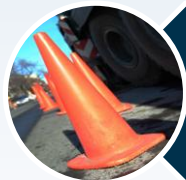
Asset Management: maintaining what exists in good condition



Mobility: to support and encourage economic growth and quality of life



Governance: more cooperation and collaboration, especially relative to land use and transportation



Safety: developing programs and practices that deal with changing times – more elderly, more trucks, etc.



Revenue: developing sustainable funding options

Issues By Relevant Goal

Infrastructure Preservation and Maintenance

Heavy truck loads

Backlog of needs

Transfer of low volume & low function roads

Risk of severe storm damage

Safety

Rail crossing safety

Truck issues

Needs of elderly

Issues By Relevant Goal

Economic Competitiveness

Regional mobility –
travel time

Freight bottlenecks,
around ports

Access management

Connections between
cities/towns

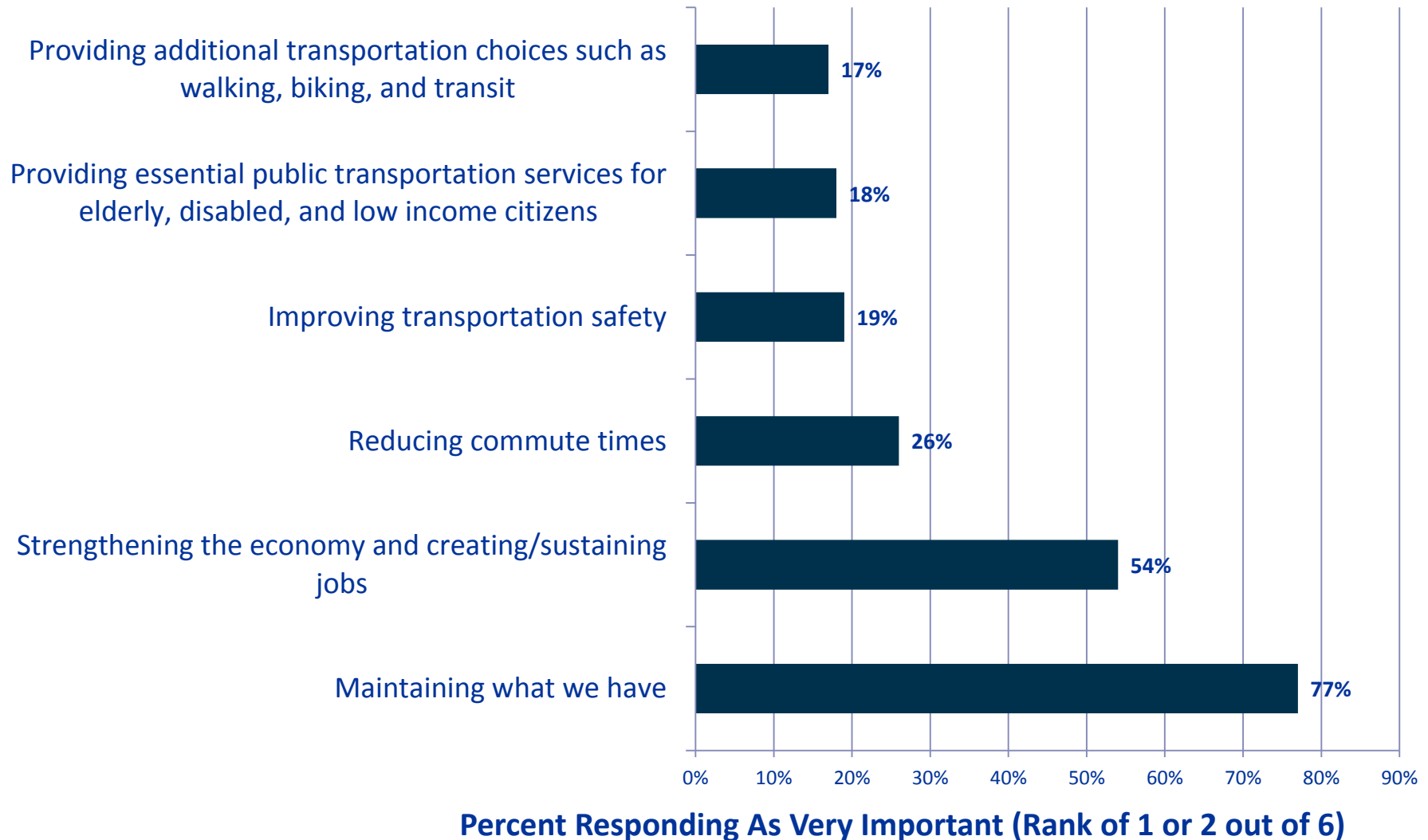
Community Development and Enhancement

Land use/
Transportation

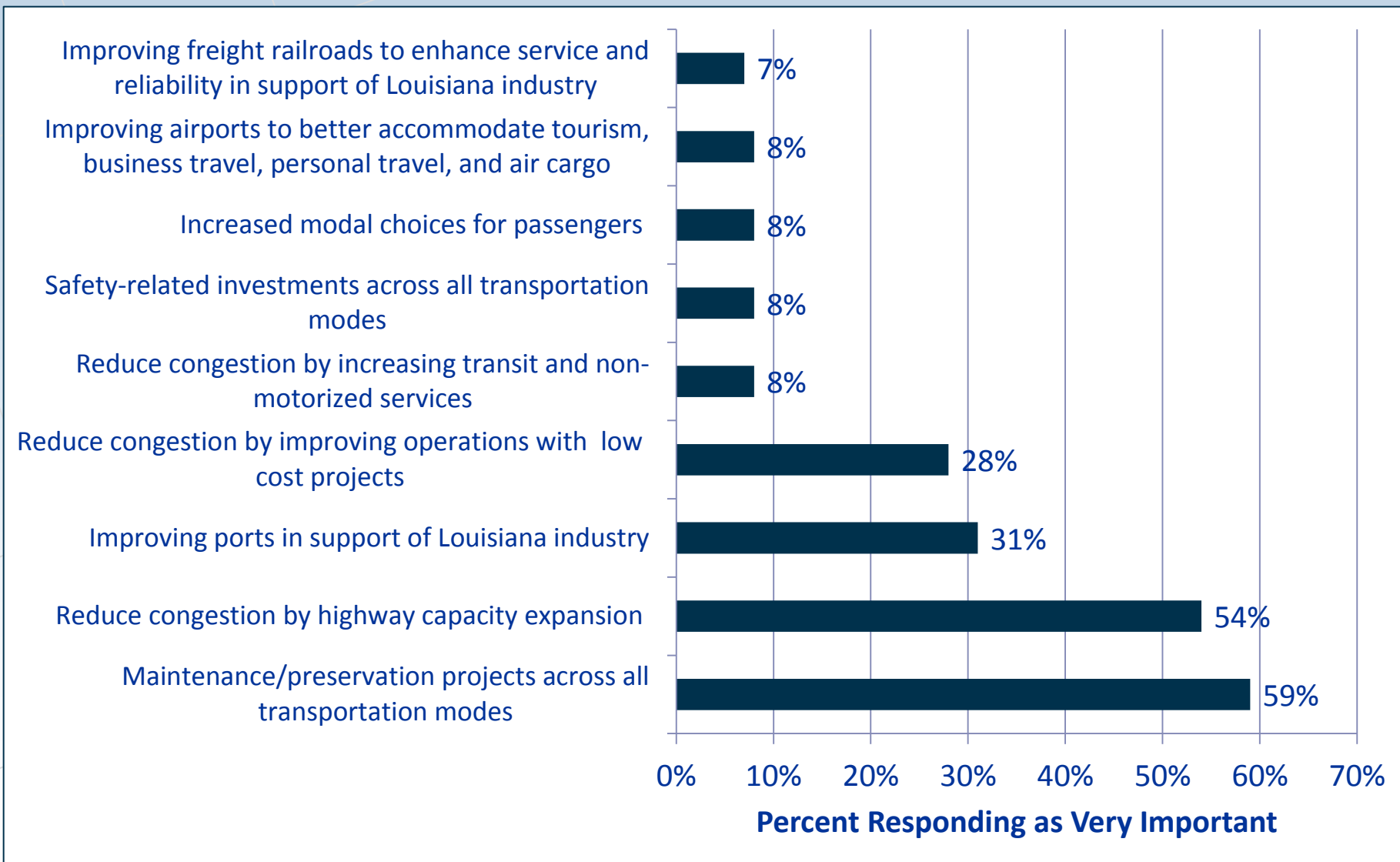
Transit needs

Connections between
modes

Legislative Questionnaire: Where Funding Should Go



Legislative Questionnaire – Type Projects Most Needed



Public Survey Results

Broad Impressions: *Agree*

- Transportation important to quality of life & economy (97%)
- Reliable air service (69%)
- Roads & bridges are safe (51%)

Investments to: *Important*

- Maintain what we have (91%)
- Increase safety (78%)
- Reduce congestion (74%)
- Ports to attract jobs & businesses (73%)

Public Survey Results

Revenue Options: *Approve*

- Voter approved local tax (78%)
- Voter approved tolls (61%)
- Reduce spending on other programs (23%)

Future Land Use: *Agree*

- State with small-medium cities (53%)
- State with large suburban-type cities (23%)
- State with large high-density cities (10%)

Vision, Goals, Objectives and Performance Measures

Draft Vision

Louisianans enjoy the quality of life offered by both the urban and rural areas of the state. Louisiana will nurture and support a continuation of small and medium-sized towns and cities with open space between them. There will be a prosperous economy due in large part to an integrated, connected, safe and secure, well-maintained, balanced transportation system that moves people and freight effectively from, within, and between Louisiana's urban and rural areas via land, water, and air.



Infrastructure Preservation & Maintenance

Preserve Louisiana's multimodal infrastructure in a state of good repair through timely maintenance of existing infrastructure

Objectives

- Keep Louisiana's highway pavement, bridges, and highway-related assets in good condition
- Assist modal partners in achieving state-of-good repair for aviation, port, rail, transit, and navigable waterway infrastructure

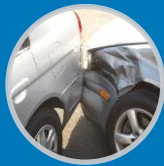
Performance Measures

Direct Measures

- Percent of State Highway System meeting pavement condition targets, by system tier (Interstate, NHS, SHS, RHS)
- Percent of structurally deficient bridges by deck area for each tier

Indirect Measures

- Percent of public-owned airports meeting the State's standard
- Percent of transit fleets meeting applicable condition standards



Safety

Provide safe and secure travel conditions across all transportation modes through physical infrastructure improvements, operational controls, programs, and public education and awareness

Objectives

- Reduce number and rate of highway-related crashes, fatalities and serious injuries
- Reduce number of pedestrian and bicycle crashes
- Assist modal partners in achieving safe and secure aviation, port, rail, transit, and waterway performance

Performance Measures

Direct Measures

- Highway fatalities and serious injuries (number and rate)
- Crashes involving trucks (number and rate)
- Number of crashes involving transit vehicles
- Number of crashes at rail crossings
- Number of crashes involving pedestrians and bicyclists

Indirect Measures

- Number of collisions on waterways (12-year rolling average)
- Percent of public airports meeting or exceeding federal/state safety standards



Economic Competitiveness

Provide a transportation system that fosters diverse economic and job growth, international and domestic commerce, and tourism

Objectives

- Improve the efficiency of freight transportation and the capacity of freight-related infrastructure throughout Louisiana
- Improve access to intermodal facilities and the efficiency of intermodal transfers
- Provide predictable, reliable travel times throughout Louisiana
- Ensure small urban areas (5000+ population) are well connected with one another and with large urban employment centers

Performance Measures

Direct Measures

- % principal arterial highways with acceptable V/C ratios
- Annual hours of delay from incidents on freeways
- Number of freight bottlenecks addressed
- Place holder for any MAP-21 freight efficiency measurement requirements developed by FHWA

Indirect Measures

- Percent of navigable waterway miles maintained to federally authorized dimensions



Economic Competitiveness, cont'd

Provide a transportation system that fosters diverse economic and job growth, international and domestic commerce, and tourism

Performance Measures, cont'd.

Direct Measures

- Percent of highways connecting urban areas that meet minimum state standards
- Annual tonnage and value of freight moved at Louisiana ports
- Percent of shortline freight rail system capable of supporting 286K lb cars



Community Development & Enhancement

Provide support for community transportation planning, infrastructure, and services

Objectives

- Cooperate with and support MPOs, State planning and development districts, and local governments with the establishment and refinement of land use, transportation, and community development plans
- Increase options available to local governments to seek sustainable revenue for local transportation needs
- Reduce barriers to state and local collaboration
- Enhance access to jobs for both urban and rural populations
- Improve modal options associated with supporting the economy and quality of life regardless of age, disability, or income
- Identify methods to preserve the integrity and character of “town centers” and preserve open space, or the appearance of open space, between them

Community Development & Enhancement, cont'd



Provide support for community transportation planning, infrastructure, and services

Performance Measures

Direct Measures

- Percent of parishes and municipalities with local comprehensive plans
- Number of parishes with elderly and handicapped transit service
- Number of parishes with general transit service



Environmental Stewardship

Ensure transportation policies and investments are sensitive to Louisiana's environmental issues

Objectives

- Minimize the environmental impacts of building, maintaining, and operating Louisiana's transportation system
- Comply with all federal and state environmental regulations

Performance Measures

Direct Measures

- Number of parishes that have met NAAQS mobile source emissions standards
- Acres of wetlands impacted by DOTD or DOTD-funded projects
- Percent of DOTD fleet converted to alternative fuels
- Number of state historic sites impacted by DOTD or DOTD-funded projects
- Number of state cultural resource sites impacted by DOTD or DOTD-funded projects
- Place holder for any MAP-21 air quality measurement requirements developed by FHWA

Indirect Measures

- Percent of public fleets converted to alternative fuels

Needs Summary

State System Needs

Category	Needs (\$M)	Definition
Highway	\$22,947.7	DOTD pavement performance standards, current safety programs, and address major congestion issues
Non-motorized	\$384.3	10% of non-interstate NHS, wider shoulders
Bridge	\$4,861.5	DOTD performance standards
Transit	\$7,184.4	Modest expansion for population growth
Ports & Waterway	\$7,107.3	Port improvements, dredging, deepening
Aviation	\$2,640.0	Address existing deficiencies and long-term needs
Passenger/Freight Rail	\$1,975.7	Short- and long-term capacity needs
Total	\$47,100.9	

Funding Scenarios & Funding Gap

Revenue Scenario Development

Scenario 1 - Baseline

- 0.5% Annual State and Federal Revenue Growth

Scenario 2 - Reduction

- Baseline + Major Reduction in Federal FY 15, Slight Rebound FY 16

Scenario 3 - Modest Increase

- Baseline + Dedicated Vehicle Sales Tax \$ Beginning FY 20

Scenario 4 - Aggressive Increase

- Baseline + Dedicated Vehicle Sales Tax \$ Beginning FY 20 + \$300M Annual Federal Increase Beginning FY 19

Revenue Totals by Scenario

Mode	Scenario Revenue Levels, FY 2012 - 2044, Constant 2010 Dollars, in Billions			
	1B-Baseline	2B-Reduction	3B-Modest Increase	4B-Aggressive Increase
Road & Bridge	\$15.6	\$13.4	\$24.5	\$31.0
Transit	\$1.8	\$1.5	\$1.8	\$2.3
Port	\$0.4	\$0.4	\$1.0	\$1.0
Aviation	\$0.7	\$0.7	\$0.7	\$0.7
Rail	\$0.0	\$0.0	\$0.1	\$0.1
Total	\$18.5	\$16.0	\$28.0	\$35.0
Annual Avg.	\$0.56	\$0.49	\$0.85	\$1.06

Funding Gap: Needs vs. Baseline Revenues

Mode	Needs	Baseline Revenues (in Billions)	Funding Gap
Road & Bridge	\$28.19	\$15.60	\$12.59
Transit	\$7.18	\$1.80	\$5.38
Waterways & Ports	\$7.11	\$0.40	\$6.71
Passenger/Freight Rail	\$1.98	\$0.00	\$1.98
Aviation	\$2.64	\$0.70	\$1.94
Total	\$47.10	\$18.50	\$28.60

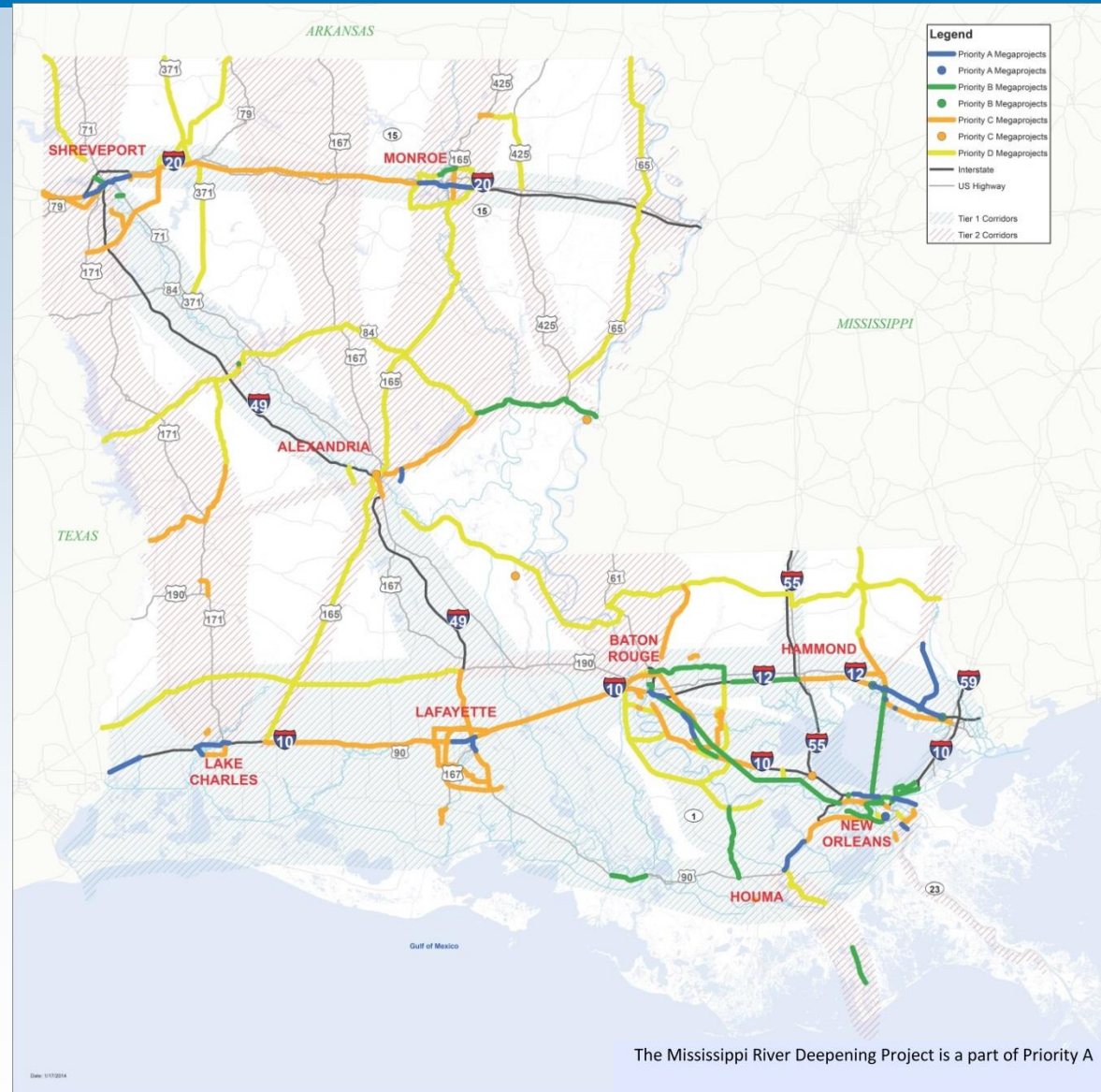
Recommendations by Advisory Council

LUNCH BREAK

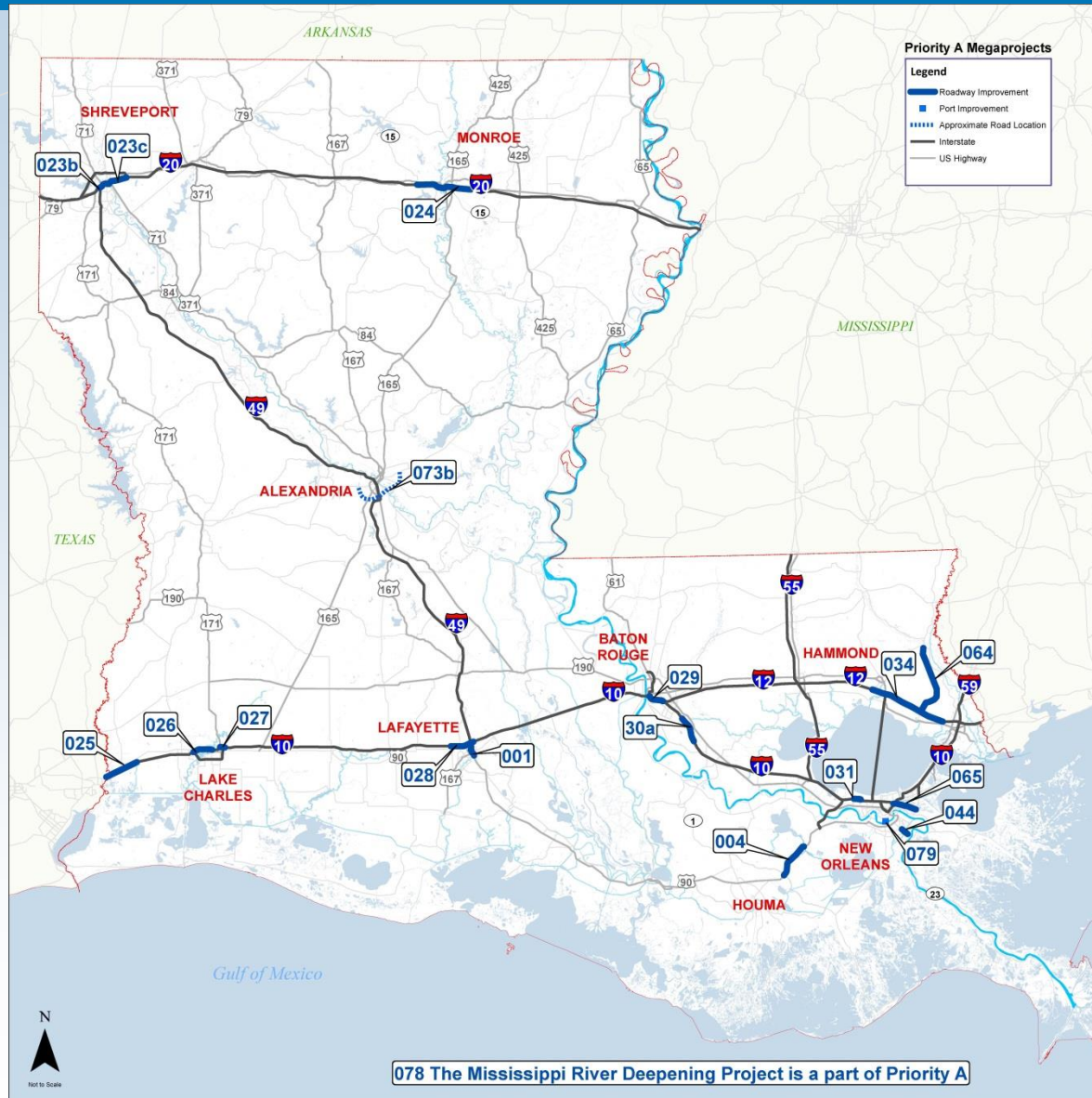
Megaprojects

Megaprojects

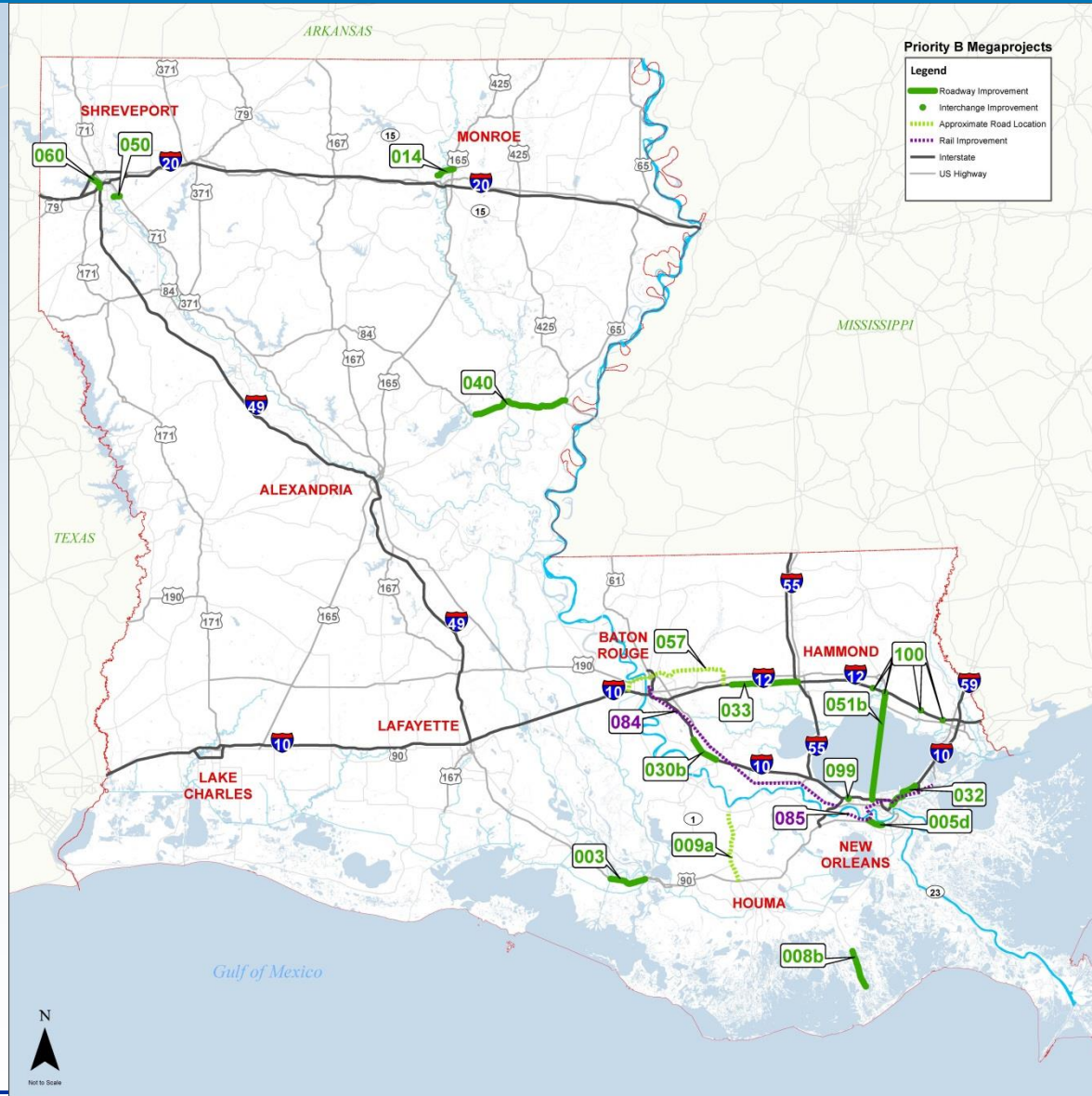
- **\$41.5B Total**
 - \$34.9B Other Sources
 - 33 Interstate Projects
 - 29 New Projects
- **Priority A**
 - 19 Projects \$3.7B
(+ \$840M other sources)
- **Priority B**
 - 17 Projects \$2.9B
(+ \$2.2B other sources)
- **Priority C**
 - 55 Projects \$15.5B
(other sources)
- **Priority D**
 - 22 Projects \$16.5B
(other sources)



Priority A Megaprojects



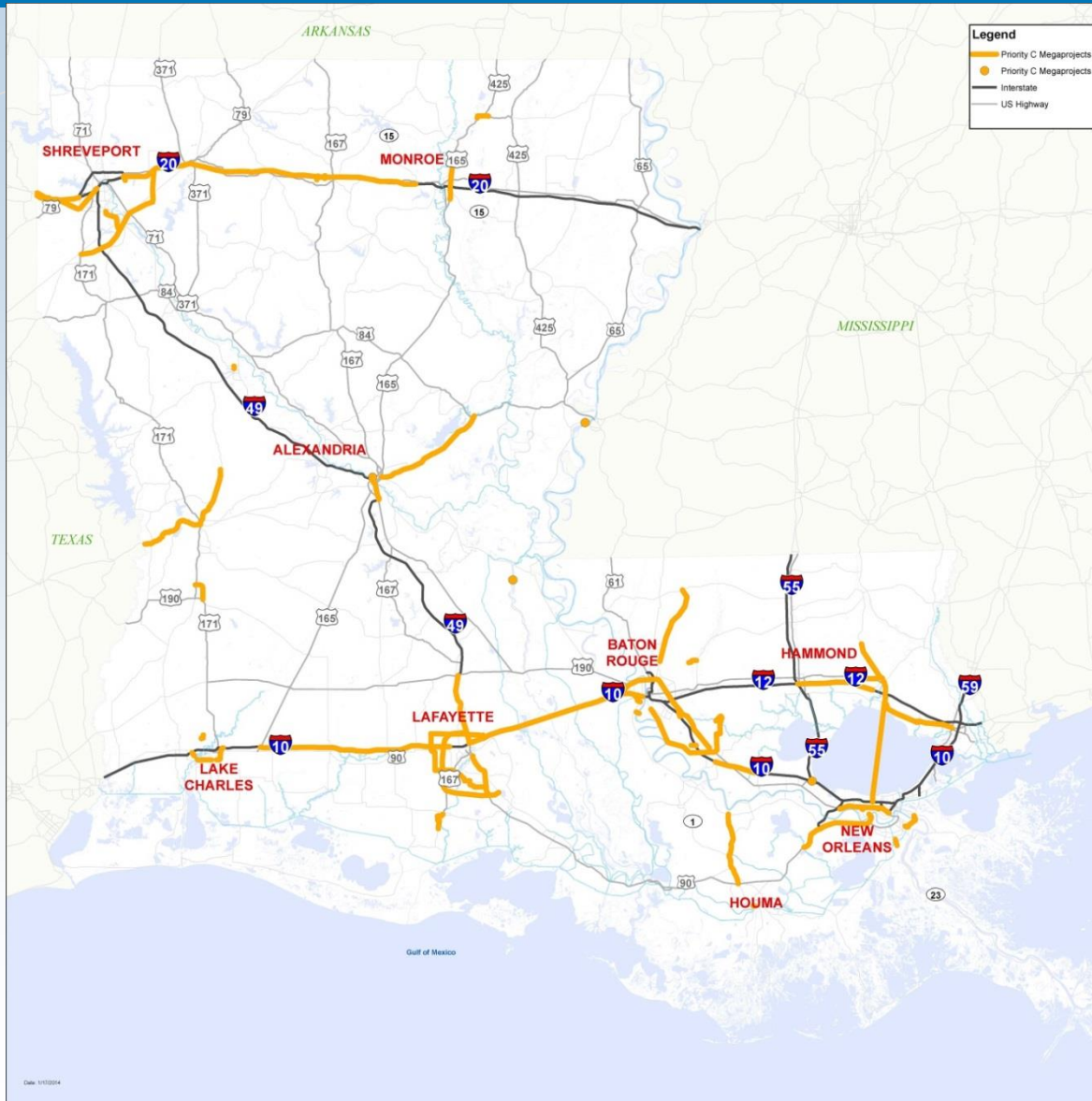
Priority B Megaprojects



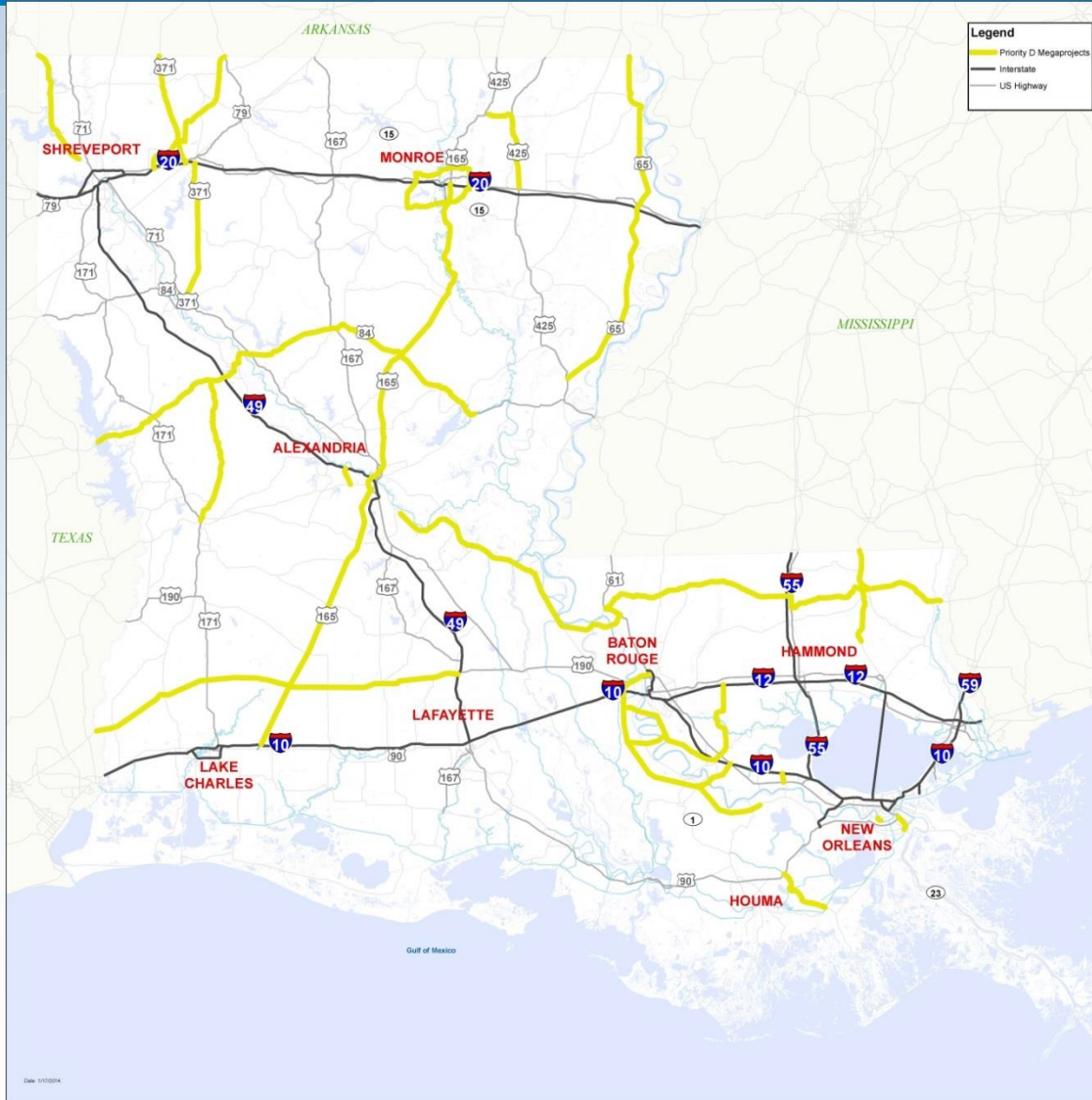
Priority A & B Megaprojects Summary

- **Priority A**
 - 19 Projects \$3.7B (plus \$840M other sources)
 - 12 interstate upgrades/widening
 - 3 bridge projects
 - 2 new highways
 - River deepening and Port of NO container terminal
- **Priority B**
 - 17 Projects \$2.9B (plus \$2.2B other sources)
 - 1 highway and 5 interstate upgrades/widening
 - 4 new highways
 - 2 rail projects
 - 2 interchange improvements
 - 2 new bridges
 - Causeway Safety Improvements

Priority C Megaprojects



Priority D Megaprojects



Priority C & D Megaprojects Summary

- **Priority C**

- 55 Projects \$15.5B (other funding sources)
 - 17 highway and 16 interstate upgrades/widening
 - 11 new highways
 - 3 bridge projects
 - 3 interchange projects
 - 2 rail, 1 multi-modal project
 - 2 port projects

- **Priority D**

- 22 Projects \$16.5B (other funding sources)
 - 14 highway upgrades/widening
 - 6 new highways
 - 1 new interchange
 - 1 port project

Budget Line Items

Summary of Decisions

Thank you!



<http://www.dotd.la.gov/study/>



Dan Broussard
(Dan.Broussard@LA.GOV)